

# Ceramic Urinal with the Radar Flushing Unit SLP 32R

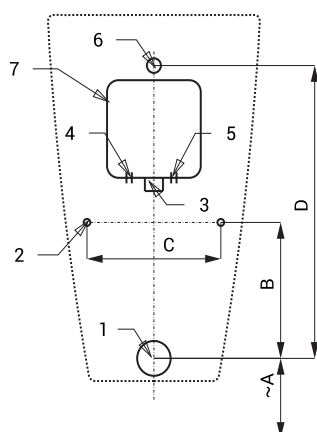


SLP 32 - ARQ WITH A COVER

## Characteristics

- easy installation
- whole flushing unit is placed behind the urinal
- system reacts only on the direct use of the urinal (it analyses changes, which are proceeded inside of the urinal, when a liquid is flowing through)
- adjustable flushing time 0,5 - 15,5 s
- parameters adjustment by remote control SLD 04 without the necessity to dismantle the urinal from the wall (acoustic setting indication)
- automatic flushing after each 6 hours non-use
- possibility to regulate a water flow by the angle valve
- radar flushing unit recharges a water to the siphon after each flushing

## Installation Drawing



- 1 - water outlet  $\varnothing$  50 mm  
 2 - holes for fitting  
 3 - water supply  
 4 - power supply 230 V AC (SLP 32RZ)  
 5 - power supply 24 V DC (SLP 32R)  
 6 - inlet fitting  
 7 - mounting box

SLP 32R

Dimensions (mm)	A	B	C	D
SLP 32 - ARQ	390	195	200	420

\* for the height of the front edge of the urinal 650 mm above the floor

## Supply Specification

SLP 32R	- Supply No. 01324	ceramic urinal with the radar flushing unit, plastic mounting box with brass screw coupling, electromagnetic valve and angle valve, inlet fitting with a rubber sealing,
SLP 32RZ	- Supply No. 01325	power supply (SLP 32RZ), 4 pcs. AA alkaline batteries 1,5 V, 2700 mAh with battery case (SLP 32RB)
SLP 32RB	- Supply No. 11327	

## Technical Specification

<b>Mounting box dimension</b>	140 x 140 x 75 mm
<b>Operating voltage</b>	
▪ SLP 32R	24 V DC
▪ SLP 32RZ	230 V AC/50 Hz
▪ SLP 32RB	6 V
<b>Power input</b>	
▪ operating by 24 V DC	8 W
▪ operating by 6 V	3 W
<b>Recommended flow pressure</b>	0,1 - 0,6 MPa
<b>Rate of flow</b>	18 l/min (inf. data)
<b>Water inlet</b>	male thread G 3/4"
<b>Water outlet</b>	inlet fitting with a rubber sealing



SLA 11

SLA 11A

SLA 11B

SLA 11C

## Recommended Accessories

SLZ 01Y	- Supply No. 05012	power supply 24 V DC for operating of max. 5 pcs. of flushing units
SLZ 01Z	- Supply No. 05011	power supply 24 V DC for operating of max. 9 pcs. of flushing units
SLZ 04Y	- Supply No. 05042	power supply 24 V DC on DIN rail, for operating of max. 5 pcs. of flushing units
SLZ 04Z	- Supply No. 05041	power supply 24 V DC on DIN rail, for operating of max. 9 pcs. of flushing units
SLZ 04X	- Supply No. 10049	power supply 24 V DC on DIN rail, for operating of max. 15 pcs. of flushing units
SLZ 06	- Supply No. 05060	power supply 24 V DC for operating of max. 1 pc. of flushing unit
SLD 04	- Supply No. 07040	remote control for an adjustment of parameters
SLA 11	- Supply No. 06110	deodorising urinal screen - orange colour, mango scent
SLA 11A	- Supply No. 06111	deodorising urinal screen - red colour, kiwi and grapefruit scent
SLA 11B	- Supply No. 06112	deodorising urinal screen - transparent colour, honeysuckle scent
SLA 11C	- Supply No. 06113	deodorising urinal screen - blue colour, cotton bloom scent
SLR 01	- Supply No. 08010	plasterboard frame for urinal with mounting box behind the urinal
SLA 36	- Supply No. 06360	set of 4 pcs. alkaline batteries AA 1,5 V, 2700 mAh (for models with index B)